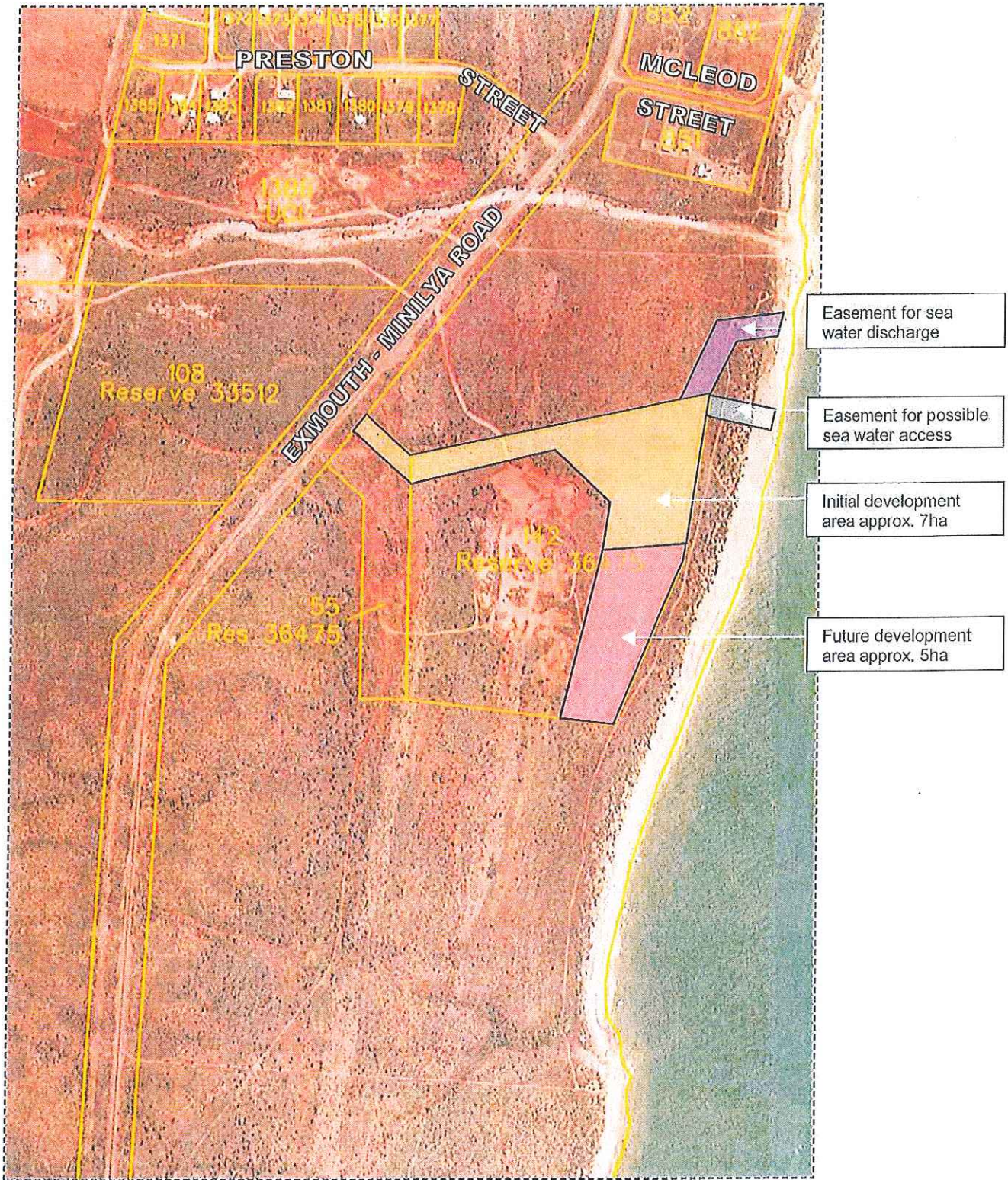


Source: Department of Land Administration (August, 2000)

Figure 1

**LOCATION MAP**  
**LYNDON LOCATIONS 55 & 142 EXMOUTH**

DRAWING NO: 2/18/24-01 DO NOT SCALE FEB '03

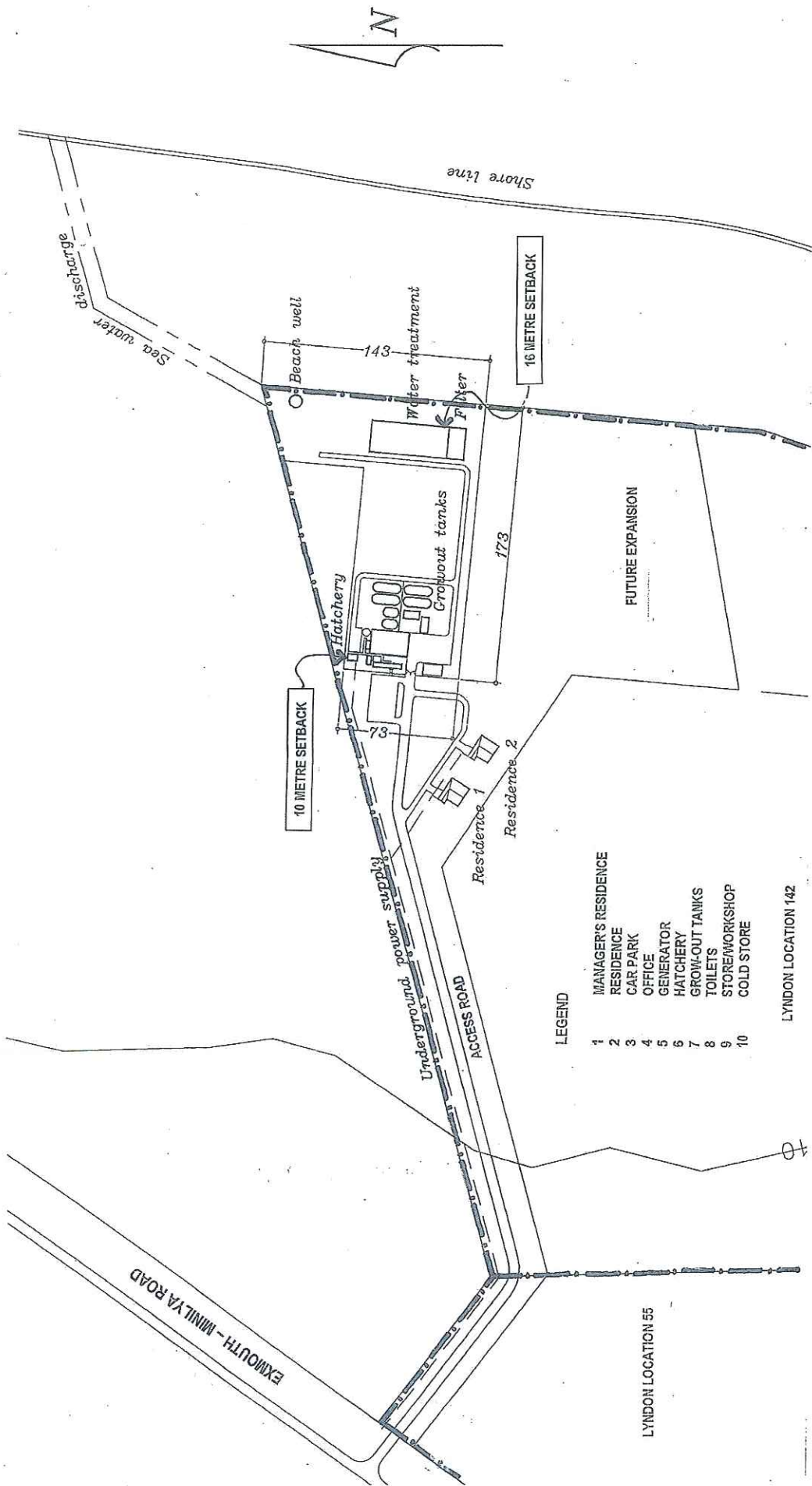


Source: Department of Land Administration (August, 2000)

Figure 2

**DEVELOPMENT EXTENT**

DRAWING NO.: 2/18/24 - 2 DO NOT SCALE FEB '03



- LEGEND**
- 1 MANAGER'S RESIDENCE
  - 2 RESIDENCE
  - 3 CAR PARK
  - 4 OFFICE
  - 5 GENERATOR
  - 6 HATCHERY
  - 7 GROW-OUT TANKS
  - 8 TOILETS
  - 9 STORE/WORKSHOP
  - 10 COLD STORE
- LYNDON LOCATION 142

**Figure 3**  
**SITE DEVELOPMENT PLAN**  
**(STAGES 1 & 2)**

(Design and layout by Detail + Design P/L)  
 DRAWING NO: 2/18/24 - 03 SCALE: 1:2500 FEB '03

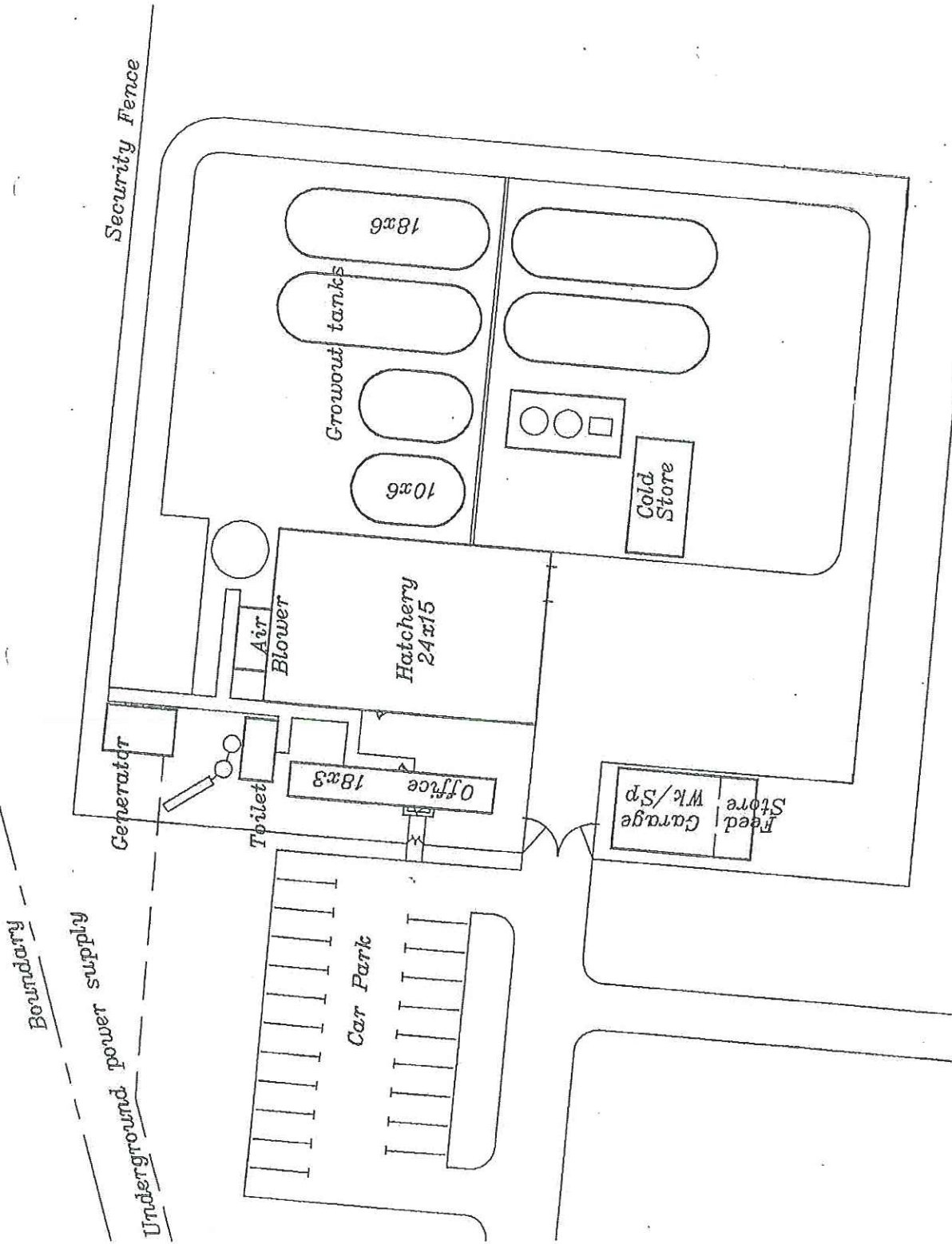
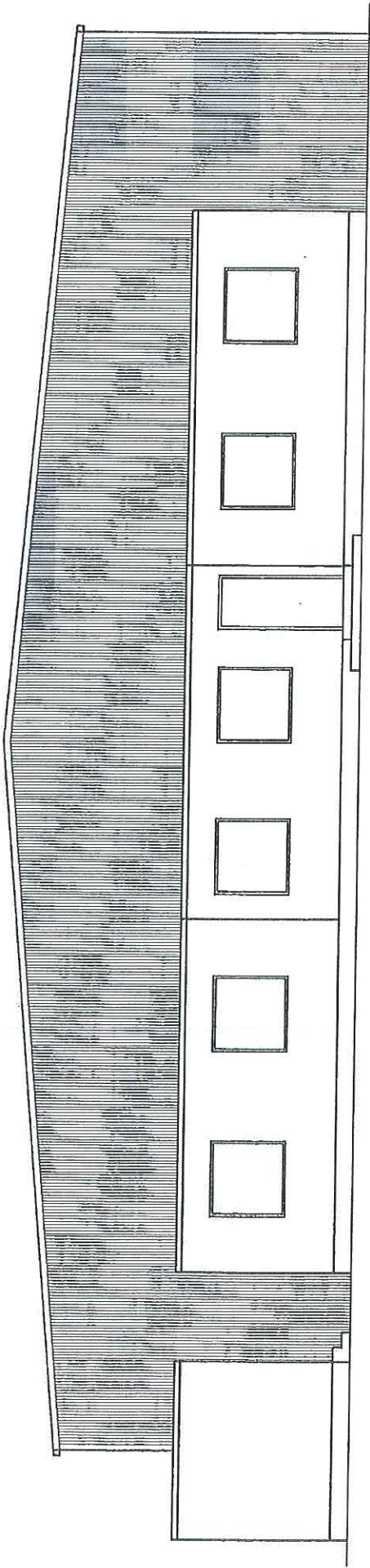


Figure 4

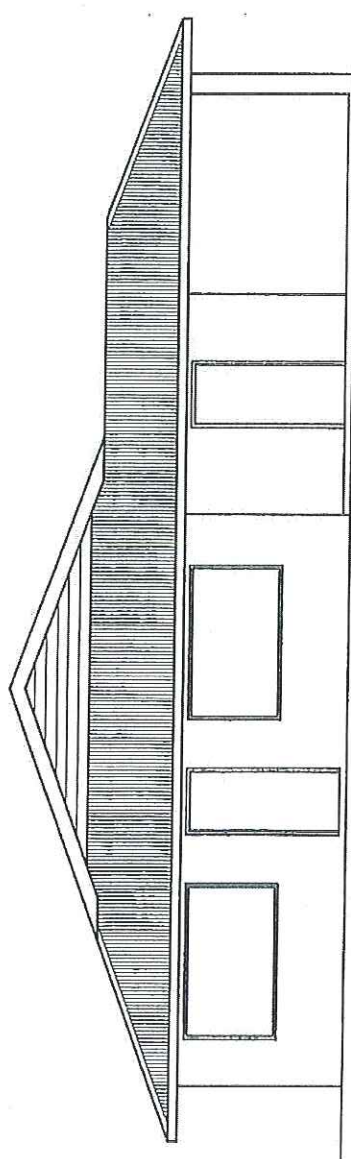
**STAGES 1 & 2 DEVELOPMENT PLAN**

(Design & layout by Detail & Design Pty Ltd)

DRAWING No: 2/18/24 - 04 SCALE 1:500 FEB '03



Office and Hatchery  
Front elevation



Residence  
Front Elevation

Figure 5

**(INDICATIVE) ELEVATION DRAWINGS**

(Design by Detail & Design Pty Ltd)

DRAWING No: 2/18/24 - 05 SCALE 1:100 FEB '03